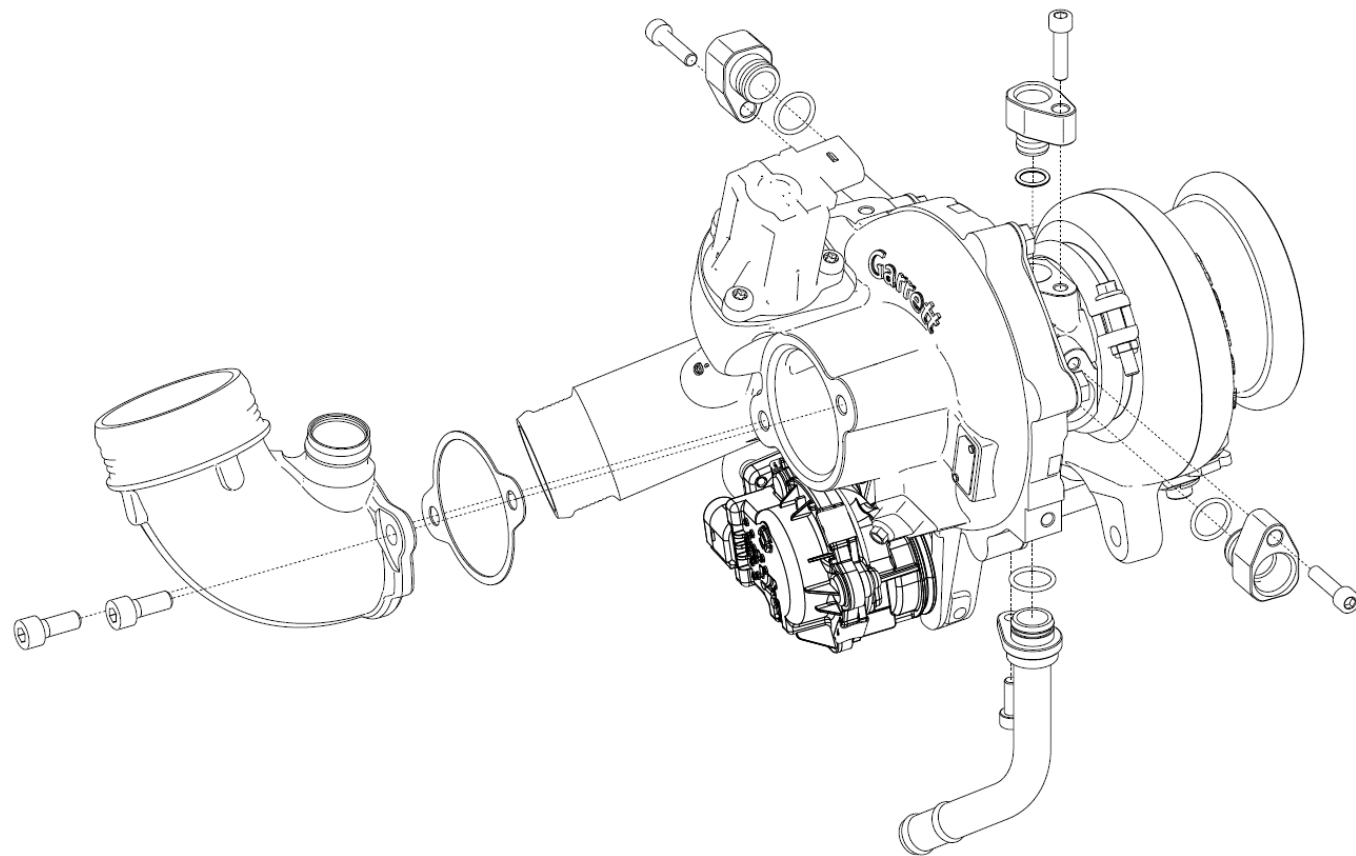
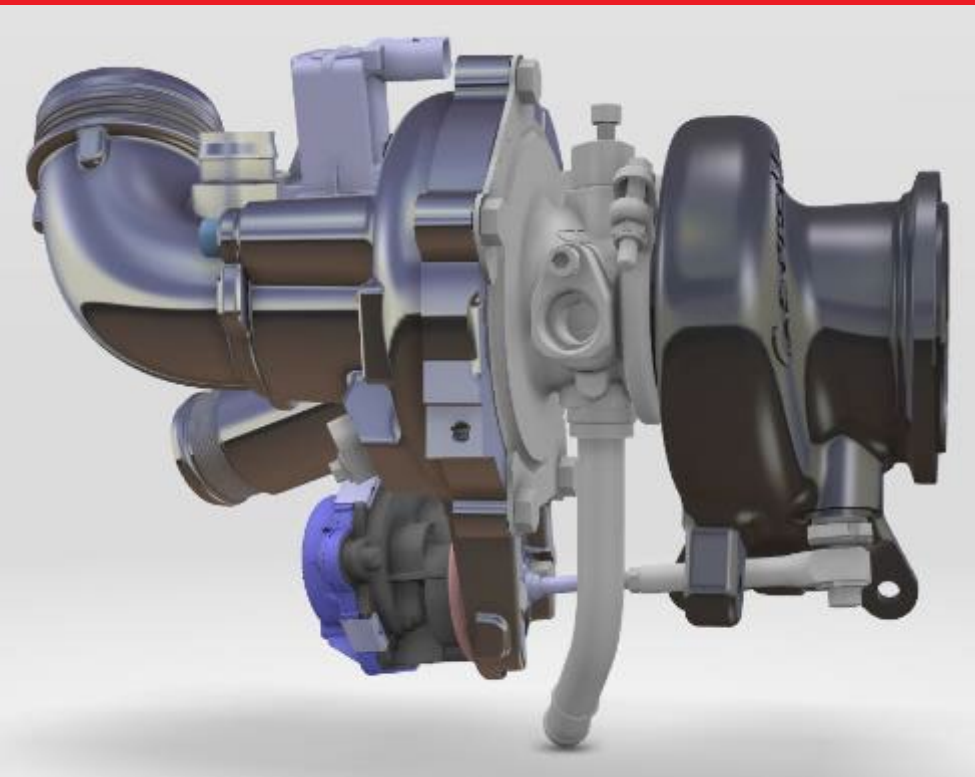


2014-18 VOLKSWAGEN 2.0L TSI MK7 POWERMAX STAGES 1 & 2 TURBO INSTALLATION GUIDELINES

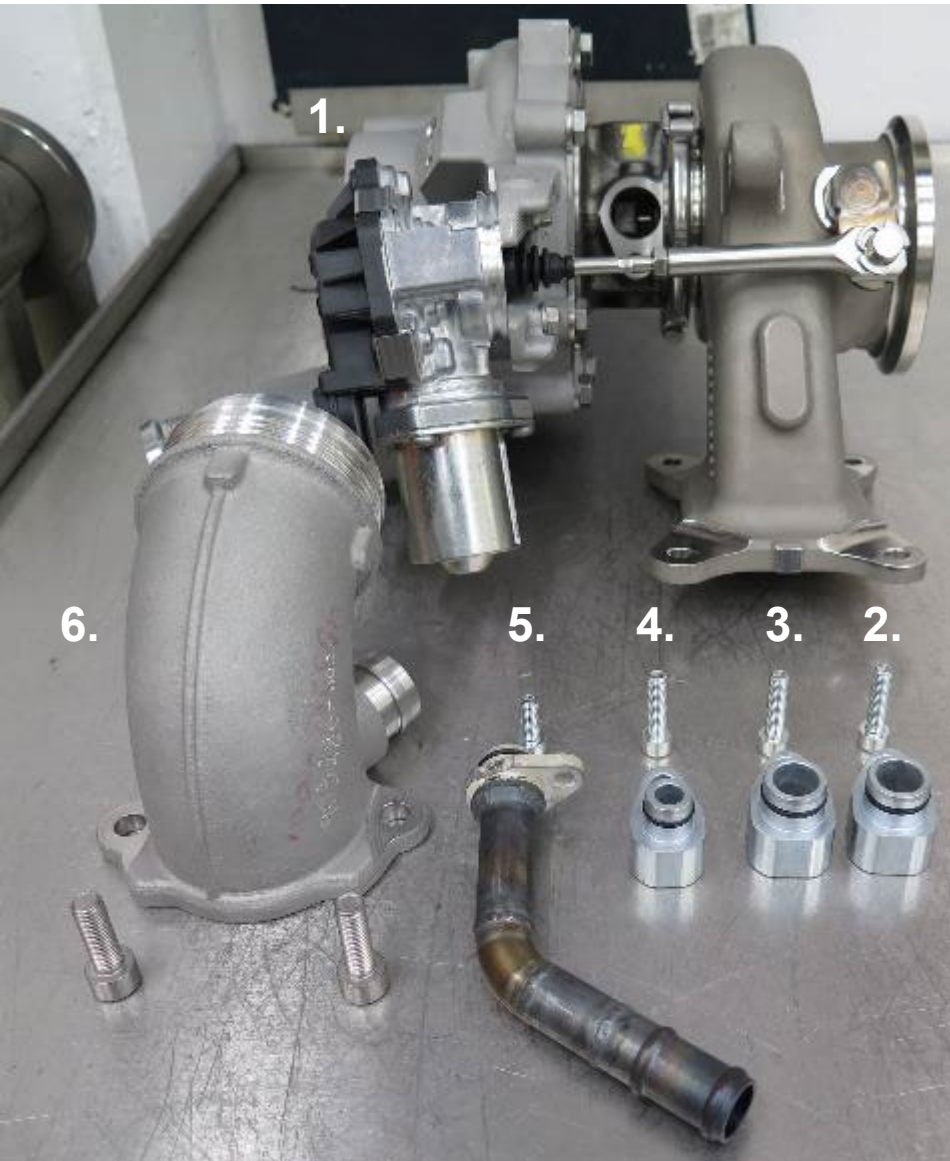
Garrett
ADVANCING MOTION

STAGE 1

(GT2260S) - 898199-5001W



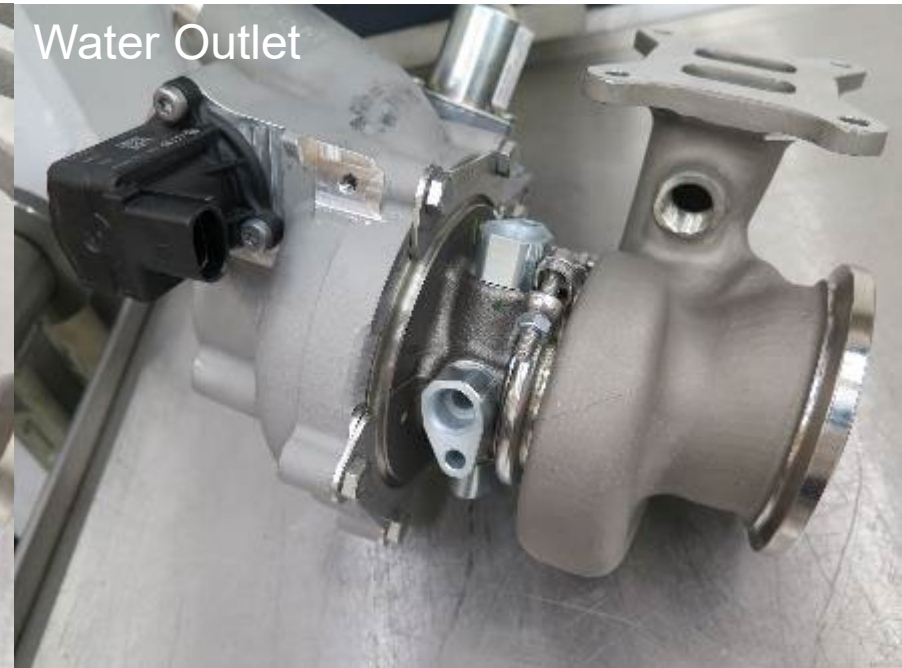
Components: Stage 1 (GT2260S) - 898199-5001W



1. Turbocharger
2. Water inlet adapter / 1 M6 x 25 bolt
3. Water outlet adapter / 1 M6 x 25 bolt
4. Oil inlet adapter / 1 M6 x 25 bolt
5. Oil outlet tube / 1 M6 x 16 bolt
6. Compressor inlet adapter / 2 M8 x 20 bolts

Installation Tightening Torques		
Water Inlet / Outlet	M6 X 25	7Nm - 5ft-lb
Oil Inlet	M6 X 25	7Nm - 5ft-lb
Oil Outlet	M6 X 16	7Nm - 5ft-lb
Compressor Inlet	M8 X 20	9Nm - 6.5ft-lb

Adapter installation



1. Clean adapter O-rings
2. Lubricate O-ring and press into correct port (see diagram above)

Water outlet installation



1. Lubricate water outlet pipe O-ring and press into the water outlet adapter



2. Attach OE water outlet pipe with provided 1 M6 x 25 bolt. Tighten to 7Nm / 5 ft-lb

OE Pipes preparation



1. OE Water inlet to be used
2. OE Oil drain to be modified
3. OE Oil inlet to be used

Oil drain- preparation



1. Remove OE drain outlet pipe by loosening the spring clamp with pliers. Remove the section circled in image 1.



2. Insert the provided drain pipe into the hose and secure the spring clamp using pliers.

Water outlet connection- on engine installation

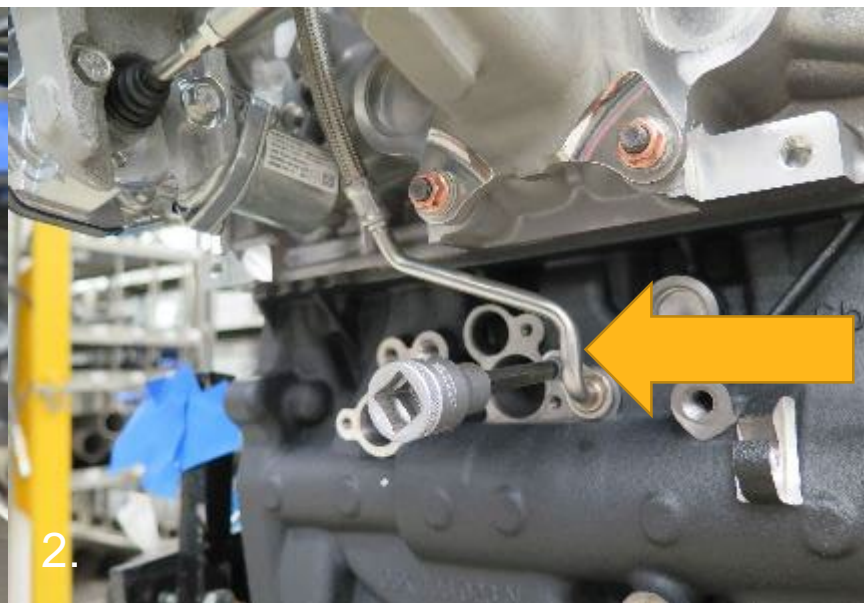


1. Connect the water outlet tube to the OE rubber hose and secure the spring clamp.

Oil inlet connection to adapter



1. Attach OE oil inlet pipe to turbo adapter



2. Attach to engine with OE bolt. Tighten to OE specifications.



3. Tighten provided 1 M6 x 25 bolt to turbo adaptor. Torque to 7Nm / 5 ft-lb

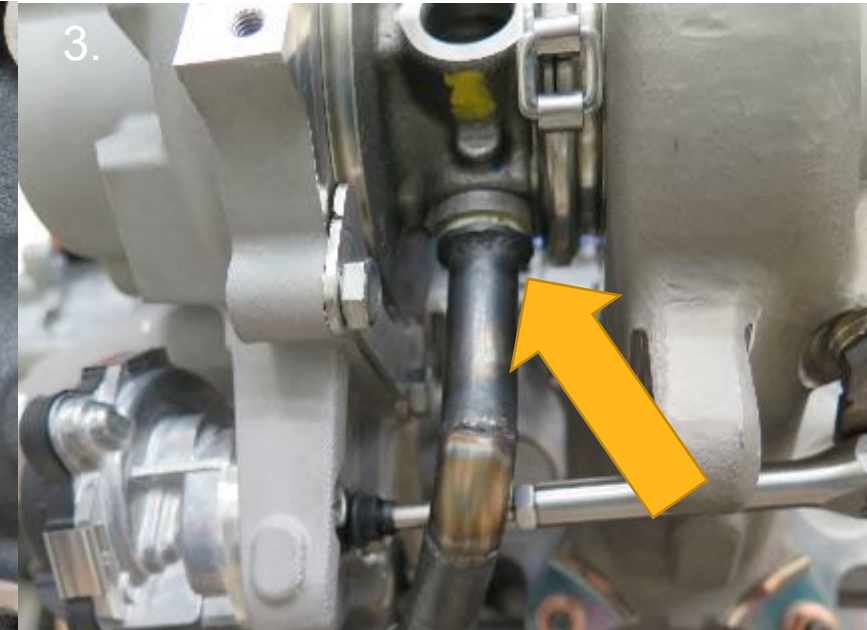
Oil drain connection



1. Modified oil drain assembly

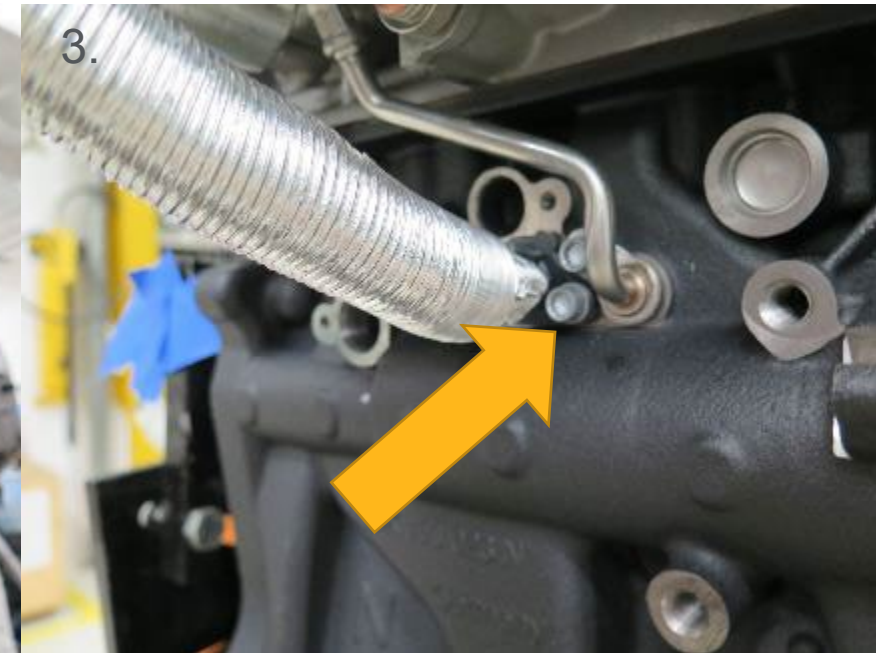


2. Attach to engine with OE bolt.
Tighten to OE specifications.



3. Attach to turbo with supplied 1
M6 x 16 bolt. Torque to 7Nm / 5
ft-lb

Water inlet OE pipe connection



1. Use provided 1 M6 x 25 bolt to attach OE pipe to turbo adapter. Torque to 7Nm / 5 ft-lb

2. Use OE bolt to secure to compressor housing. Tighten to OE specifications.

3. Use OE bolt to attach to the engine. Tighten to OE specifications.

Pipes attached- GENERAL VIEWS



Compressor inlet installation



1. Use provided inlet adapter, gasket, and 2 M8 x 20 supplied bolts to attach the compressor inlet



2. Torque bolts to 9 Nm / 6.5 ft-lb

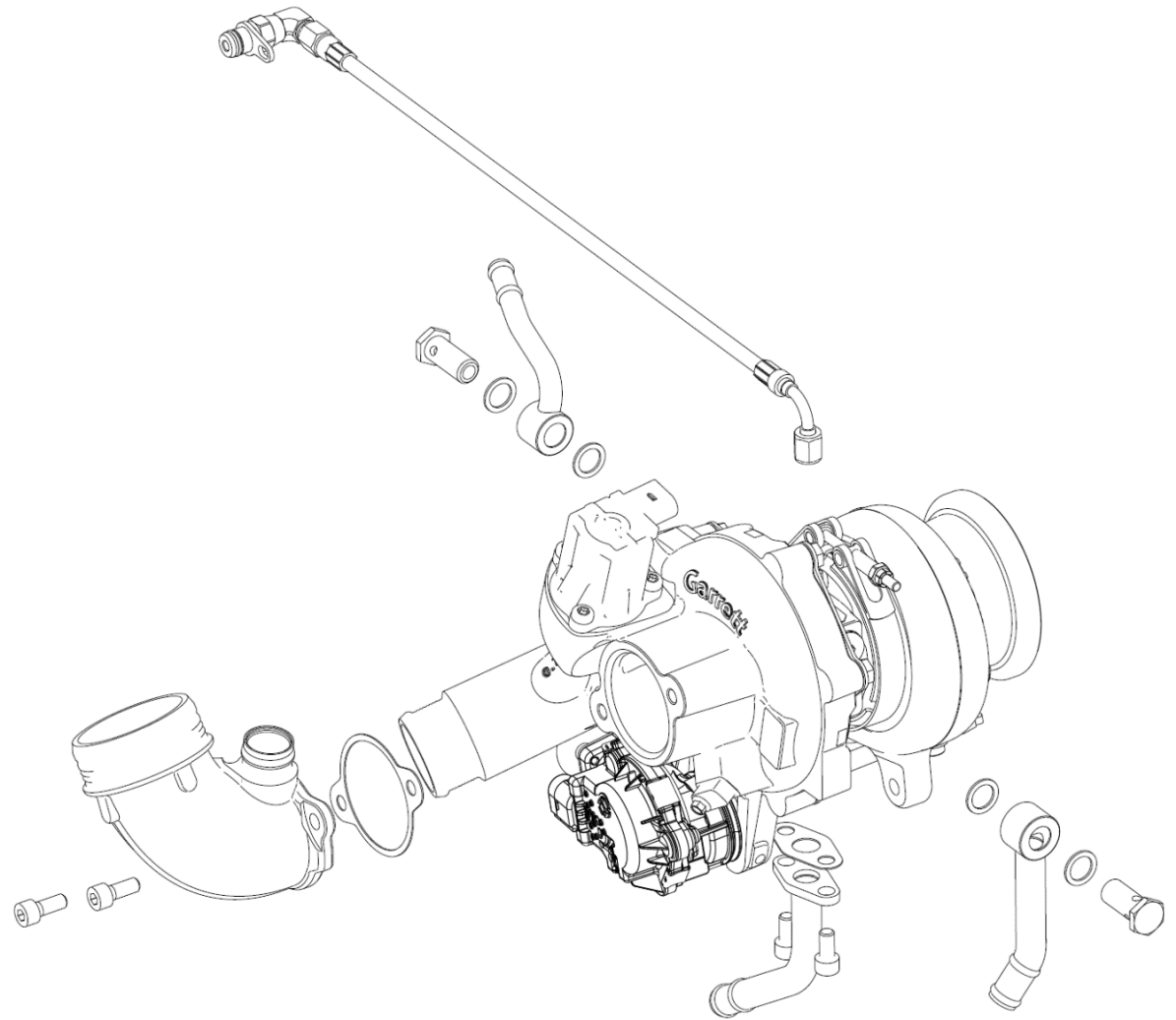
Crankcase vent hose routing



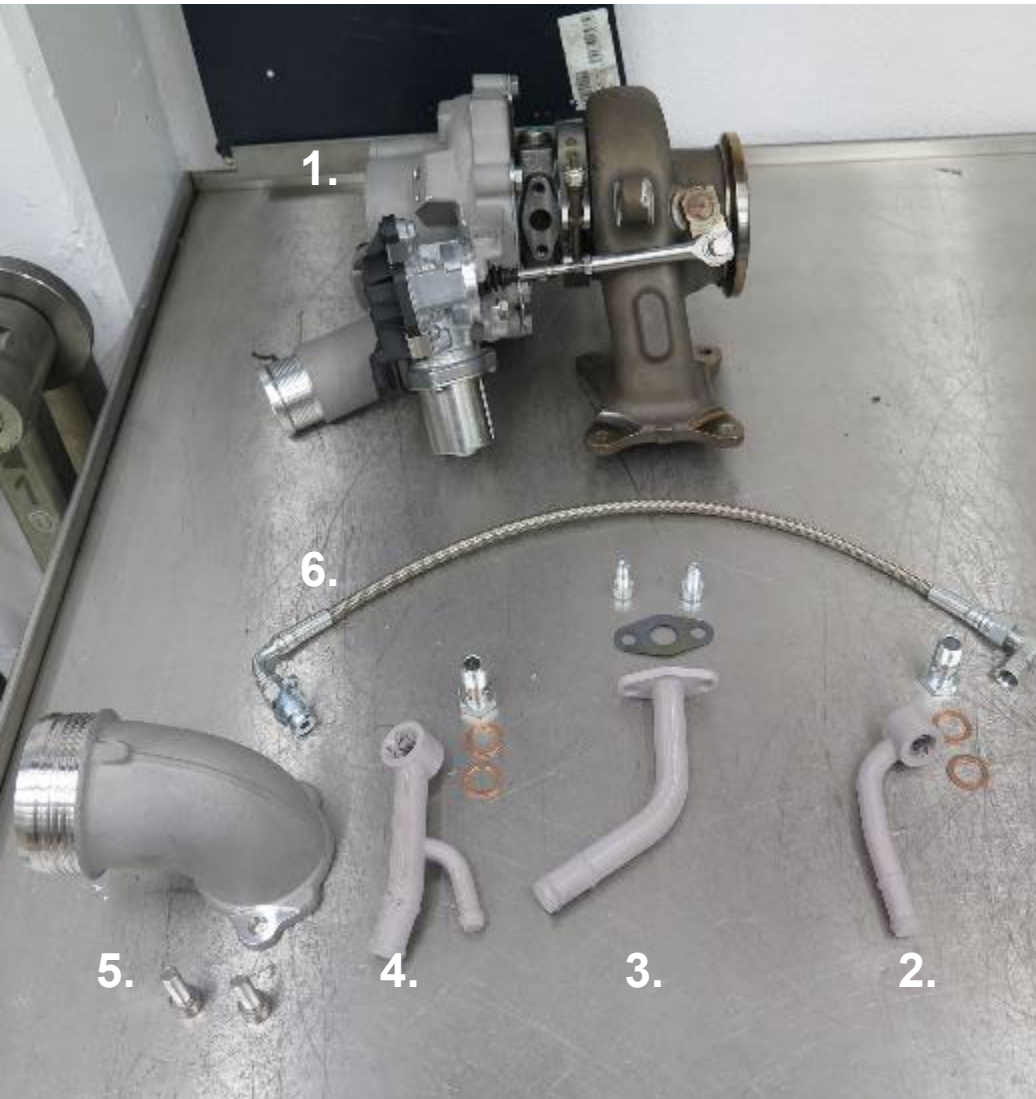
Route crankcase vent hose under electrical connector

STAGE 2

(G25-660) - 898200-5001W



Components: Stage 2 (G25-660) - 898200-5001W



1. Turbocharger
2. Water outlet tube / 1 M14 banjo bolt / 2 copper washers
3. Oil drain tube / gasket / 2 M8 x 16 bolts
4. Water inlet tube / 1 M14 banjo bolt / 2 copper washers
5. Compressor inlet adapter / gasket / 2 M8 x 20 bolts
6. Oil feed line 7/16-20 UNF -2A

Installation Tightening Torques		
Water Inlet / Outlet	M14 - Banjo Bolt	20Nm - 14.75ft-lb
Oil Inlet	7/16-20 UNF-2A	15Nm - 11ft-lb
Oil Outlet	M8 X 16	9Nm - 6.5ft-lb
Compressor Inlet	M8 X 20	9Nm - 6.5ft-lb

OE Pipes preparation



1. OE Water inlet to be modified



2. OE Oil drain to be modified

Water inlet preparation



1. Remove turbo connecting pipe



2. Replace with provided pipe

Oil drain preparation



1. Remove the OEM turbo drain tube section

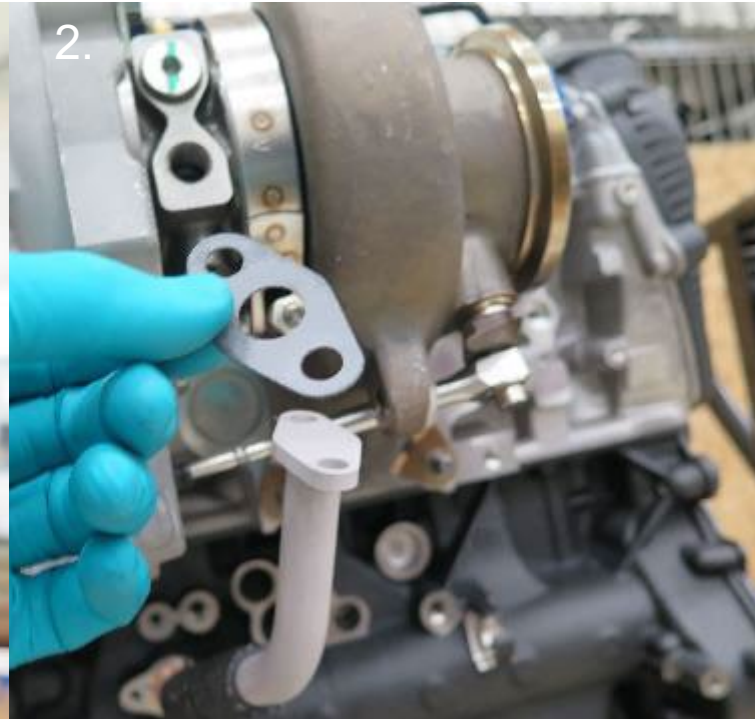


2. Replace with provided oil drain tube

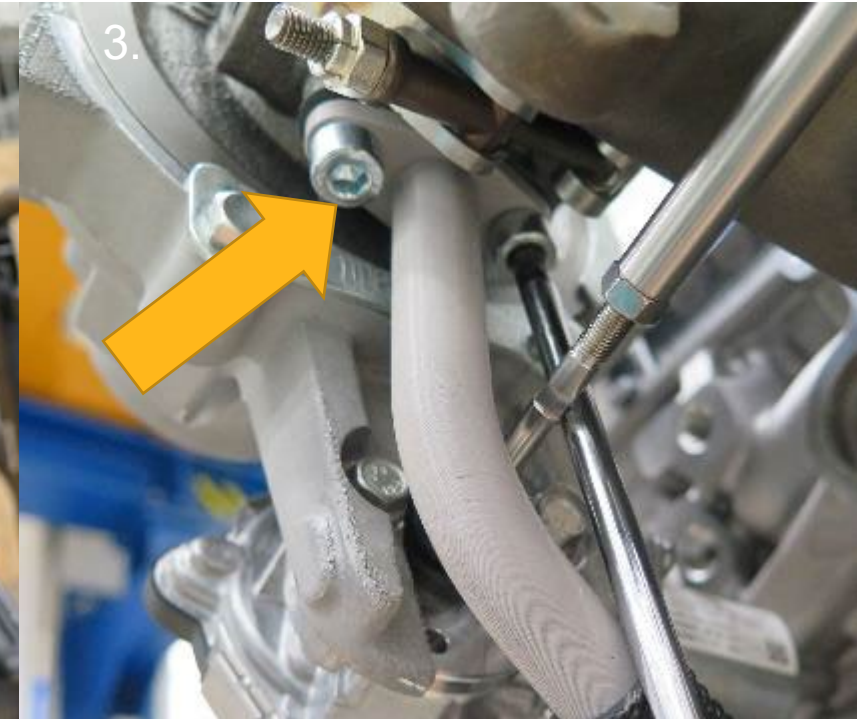
Oil drain connection



1. Attach to engine block with OE bolt. Tighten to OE specifications.



2. Place provided flange gasket on the drain tube flange.



3. Attach to turbo oil drain with provided 2 M8x16 bolts. Torque to 9 Nm / 6.5 ft-lb

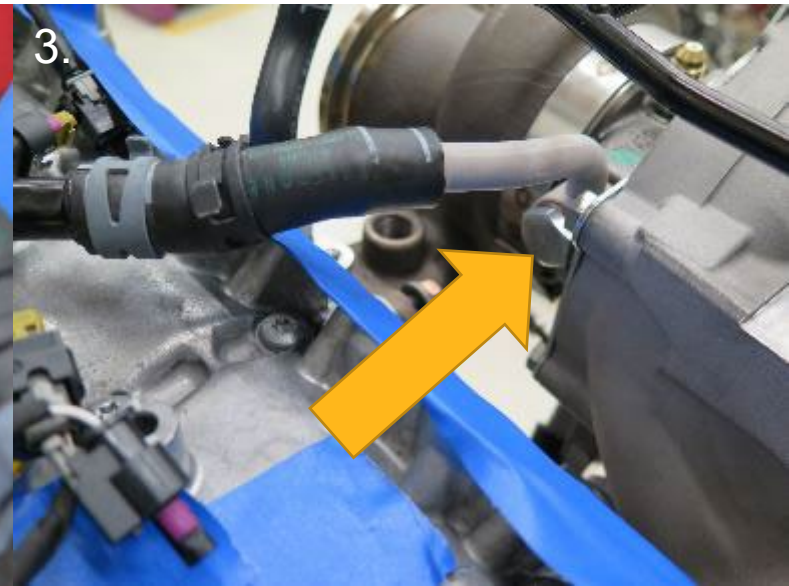
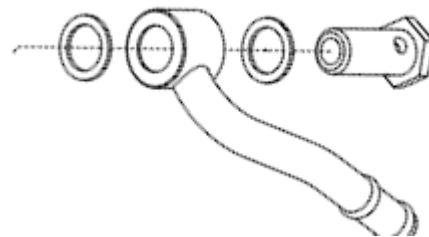
Water outlet connection



1. Insert water outlet tube into the OEM water return hose. Secure clamp. Place copper washer on the supplied banjo bolt.

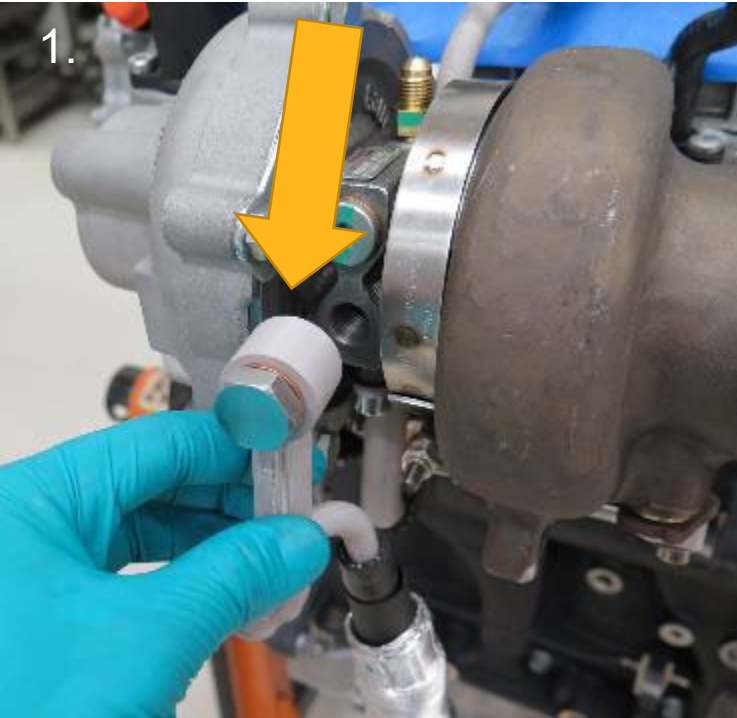


1. Place 2nd copper washer on the turbo side of the water outlet tube and insert banjo bolt.

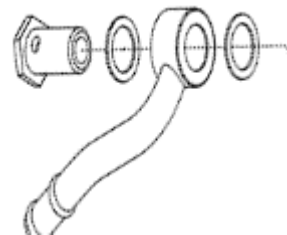


3. Turn banjo bolt with fingers to engage threads into the turbo housing. Torque to 20Nm / 14.75ft-lb

Water inlet connection



1. Attach water inlet tube to the turbo with provided banjo bolt and copper washers. Engage threads with fingers.



2. Attach lower hose to the engine using the OEM bolt. Tighten to OE specifications.

3. Torque to 20Nm / 14.75ft-lb

Oil inlet connection



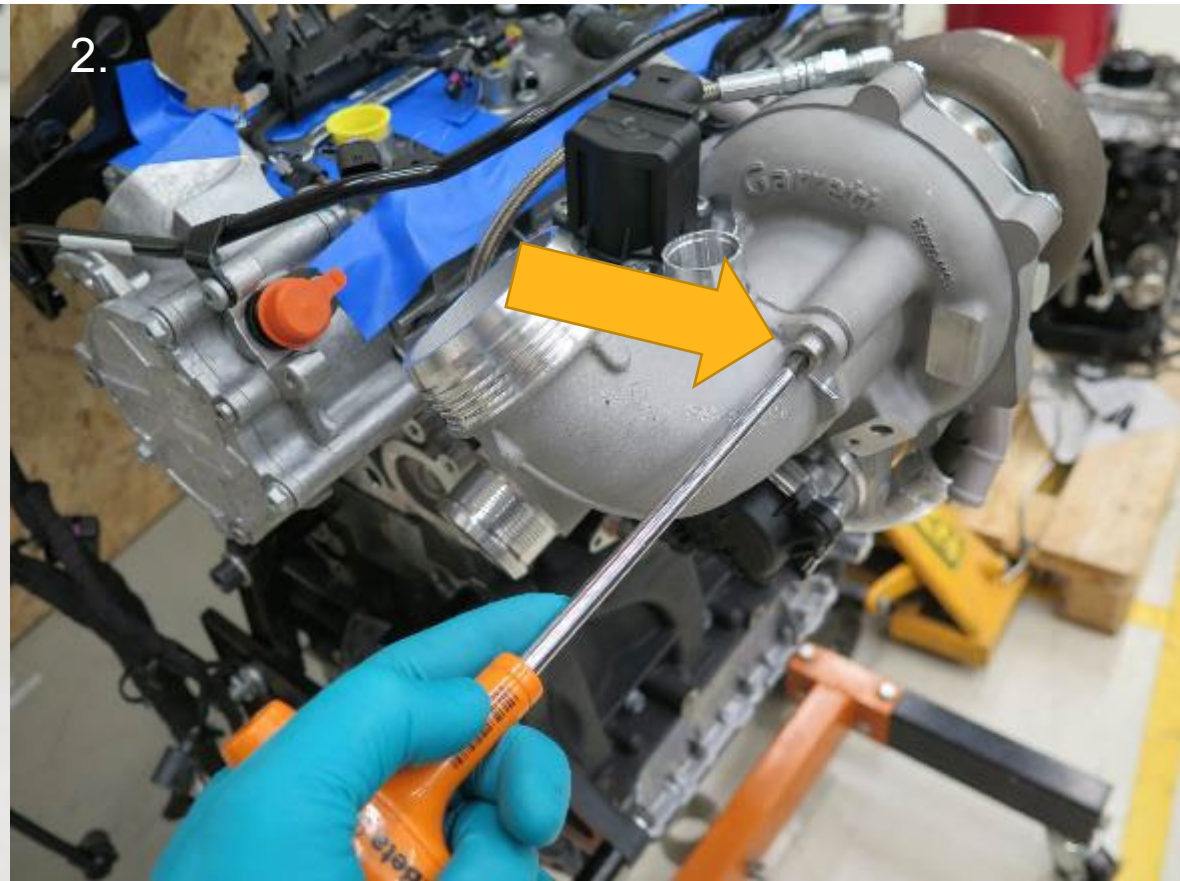
1. Attach oil line to engine using the OEM bolt. Tighten to OE specifications.

2. Attach to turbo oil inlet. Torque to 15Nm / 11ft - lb

Compressor inlet installation



1. Use provided inlet adapter, gasket, and 2 M8 x 20 supplied bolts to attach to the compressor inlet



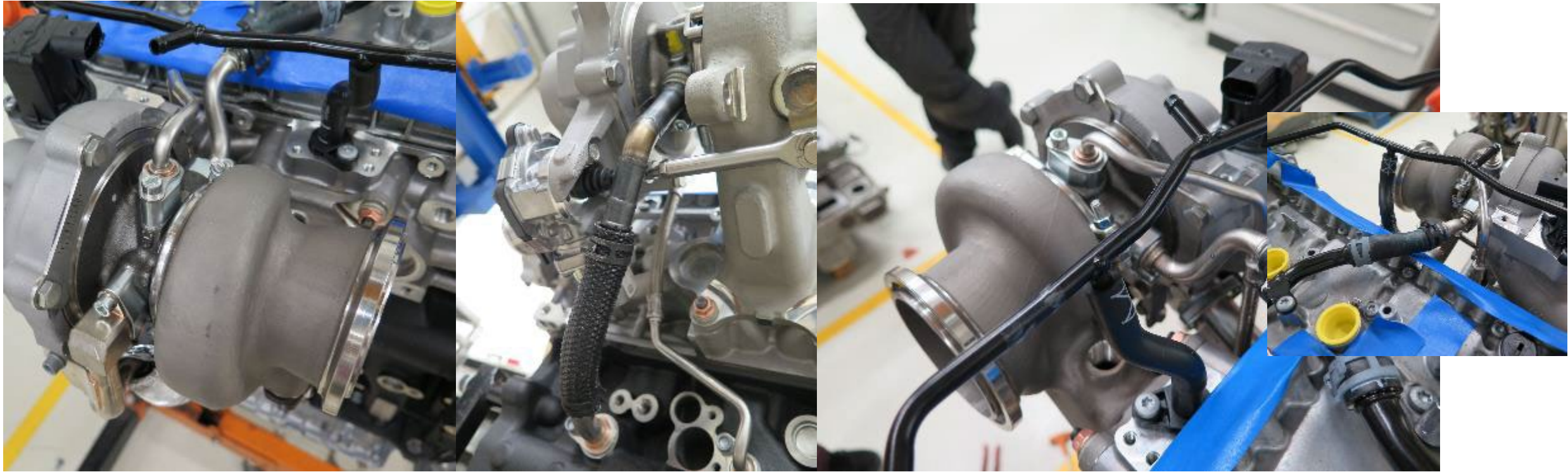
2. Torque bolts to 9 Nm / 6.5 ft-lb

Crankcase vent hose routing



Route crankcase vent hose under electrical connector

System check



1. Start engine and check all connections for water, oil, and air leaks. If you see/feel any leaks stop the engine immediately and check the connection point.



www.garrettmotion.com



| [garrettmotion](#)